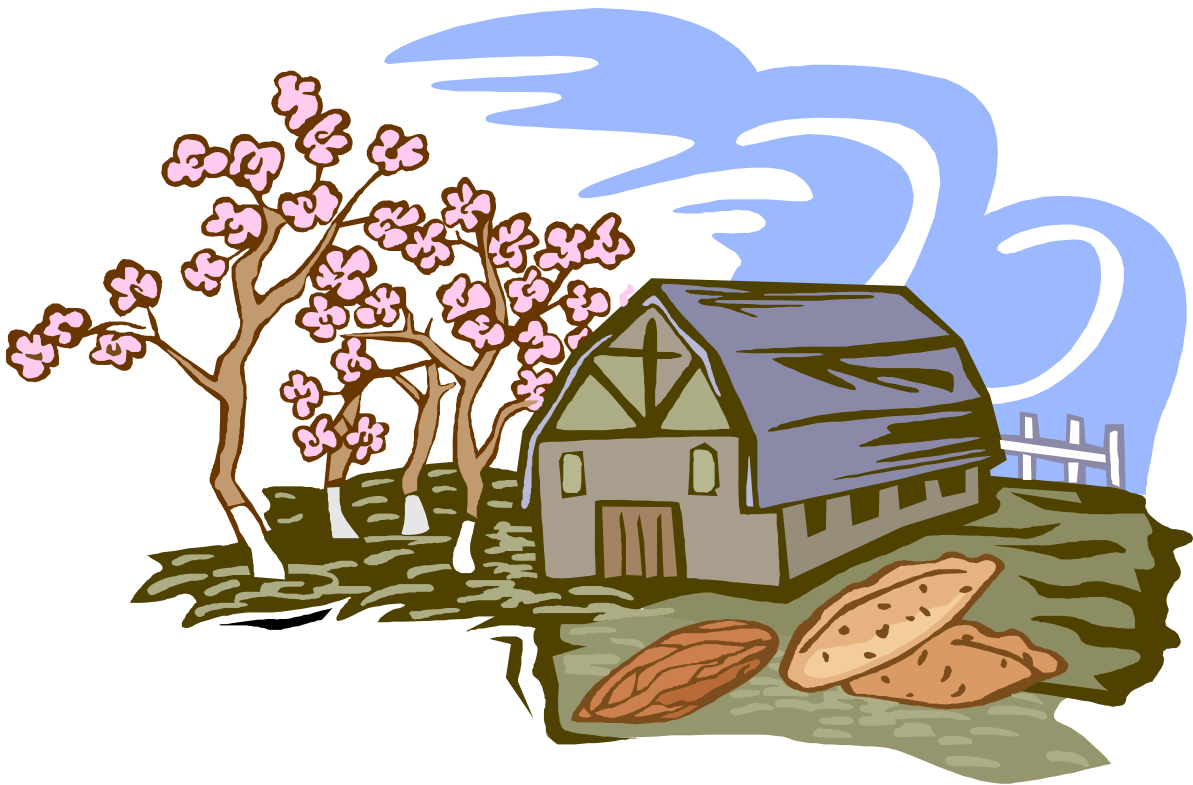


IDAHO SOIL AND WATER  
CONSERVATION DISTRICT  
TREE CATALOG

*2009-2010*





Welcome to the Idaho County Soil and Water Conservation District

Conservation Tree Program!

Orders must be placed by January 31, 2010.

**Payment is required at the time of order!**

Trees will be available for pickup in April and customers will be notified ahead of time regarding the pickup dates and times.

All trees and shrubs offered for sale are bare root unless noted.

Orders must be picked up promptly!

If there is a type of species that you would like that is not currently listed, please contact the district office for the minimum purchase requirement and availability.

We must have a combined minimum order for each species. If a minimum has not been obtained after combining orders, the plant will not be ordered and you will be notified as soon as possible. Sizes may change which may also change the price.



**Cancellations:**  
There will be no refunds for orders cancelled after January 31, 2010.  
All cancelled orders are subject to a 25% restocking fee.

To Order Call: 208-983-1046 ext. 3/Fax: 983-0519/Stefanie.Bowman@id.nacdnet.net



## MONEY AVAILABLE FOR PLANTING WINDBREAKS!

Cost-share funds may be available for tree and shrub plantings on small and large acreages through several state and federally funded programs. These programs help to cover the costs of site preparation, seedlings, planting, fencing and irrigation.

The Natural Resources Conservation Service (NRCS) in cooperation with the Farm Service Agency (FSA) administers several programs, which will cost share the planting of trees and shrubs. The Conservation Reserve Program (CRP) pays landowners who have highly erodible, previously cultivated lands to remove them from production. This program will cost-share tree and shrub plantings. The Wildlife Habitat Incentive Program (WHIP) is another program administered by the NRCS which will cost-share tree and shrub planting. Contact your NRCS office to find out more about these programs.

The Idaho Fish and Game Department (IDFG) also administers a Habitat Improvement Program (HIP), which emphasizes habitat improvement for upland game birds and waterfowl habitat. Contact the IDFG to ask for help in developing a habitat plan, which can include cost sharing for planting trees and shrubs.

**We must have a combined minimum order for each species. If a minimum has not been obtained after combining orders, the plant will not be ordered and you will be notified as soon as possible.**

The Idaho Soil and Water Conservation District offers help in planting trees! We contract with the Idaho Correctional Facility to use supervised minimum-security inmates to plant trees. Minimum number of trees must be at least 100. Contact us for current costs if you are interested in hiring the Correctional Facility.



# Deciduous Trees

---

## APPLE, COMMON WILD

Introduced from Europe and Asia, is now commonly naturalized throughout Idaho. Full sun & moderate moisture. Edible apples follow fragrant flowers. If left un-pruned, the drooping lower branches provide winter cover for up-land game birds. Grows to about 25-30'. **Zones 3-8**

Price: \$ 3.50  
Size: Plug

**Scientific Name:** Malus pumila



---

## APRICOT, MANCHURIAN

Very hardy. Quality fruit suitable for home use. Grows to 25'. **Zone 4-5**

Price: \$ 2.45  
Size: 3-4'

**Scientific Name:** Prunus armeniaca 'mandschurica'



---

## ASH, NATIVE MOUNTAIN

Grows 6 to 16 feet tall throughout the mountains of Idaho. White flower clusters, orange berries and yellow and orange fall color makes Native mountain-ash a great landscape shrub. **Zones 3-6**

Price: \$ 3.50  
Size: Plug

**Scientific Name:** Sorbus scopulina



---

## ASPEN, QUAKING

A beautiful, fast growing native tree that is extremely cold hardy. Green, heart shaped leaves, flutter in the slightest breeze. Brilliant yellow fall color. Grows 50' tall. **Zones 2-8**

Price: \$ 3.50  
Size: Plug

**Scientific Name:** Populus tremuloides



---

## CHERRY, NANKING

Very hardy, attractive, flowering ornamental; windbreak filler, fruit used for jam and jelly. Withstands heat, drought, cold, and wind. Grows 9-10' tall. **Zone 2**

Price: \$ 4.50  
Size: 3-4'

**Scientific Name:** Prunus tomentosa



---

## CRANBERRY, AMERICAN Highbush

Very attractive shrub which is native to Idaho. Showy white flowers in early summer give way to clusters of red berries. Fall color is yellow-red or reddish purple. Easy to grow and withstands many soil types. Prefers moist conditions with full sun. Berries can be boiled and strained and made into jams and jellies. Bird are attracted to the berries.

Price: \$ 3.50  
Size: Plug

**Scientific Name:** Viburnum trilobum





---

**DOGWOOD, RED OSIER**

Colorful all year. Grows rapidly to multi-stem shrub. Ideal for holding soil on steep banks. The foliage is brilliant red in fall. Grows 7-10' tall. This is a native shrub. **Zone 2**

Price \$ 3.50  
Size: 12-18"

**Scientific name:** Cornus sericea



---

**FORSYTHIA, MEADOWLARK**

Brilliant, golden-yellow early spring flowers. Best in full sun. Dense shrub is good for boarders, bank plantings. Grows to 6'. **Zone 4**

Price \$ 6.50  
Size: 6-12"

**Scientific Name:** Forsythia x Meadowlark

---

**LILAC, COMMON PURPLE**

Fragrant lilac colored blossoms in May. Attractive green foliage. Good for screen. Lilacs do well on alkaline or acid soils, are highly resistant to drought and cold. Grows 12-20' tall. **Zone 3**

Price: \$ 5.25  
Size: 12-18"

**Scientific Name:** Syringa vulgaris



---

**LINDEN, LITTLE LEAF**

Grows to 90'. Excellent shade tree and grows well in cities. Small white to yellow flowers with heart-shaped leaves. **Zone 3**

Price: Not available 2009-2010  
Size 2-3'

**Scientific name:** Tilia cordata

---

**MAPLE, RED**

Dense foliage, profuse small red flowers in early April. Brilliant scarlet color in fall. Grows to 120'. **Zone 3**

Price: \$5.00  
Size: 2-3'

**Scientific Name:** Acer rubrum



---

**MAPLE, SUGAR**

Ideal sturdy shade tree that grows 60-120'. This is the largest Native Maple tree. Plant where it will have access to plenty of water. Gorgeous yellow to scarlet color in fall. **Zone 3**

Price: \$ 3.50  
Size: 18-24"

**Scientific name:** Acer saccharinum



---

**PEA SHRUB, SIBERIAN**

Bright yellow May flowers. Excellent screen or windbreak. Drought tolerant. Grows 18' tall. **Zone 2**

Price: \$ 4.75  
Size: 2-3'

**Scientific Name:** Caragana arborescens



---

**POPLAR, SIOUXLAND**

A superior cottonless cottonwood. Pyramidal, very fast growing shade tree. Tolerates alkaline conditions and pollutants. Grows 60-80' tall. **Zone 3.**

Price: \$ 4.50  
Size: 18-24"

**Scientific Name:** Populus deltoides var. siouxland

---

---

## SERVICEBERRY

Idaho native, often called Saskatoon serviceberry. In early spring has drooping white or pinkish flowers that fade rapidly, replaced with edible purple fruit. New foliage is purple, with fall color turning red. Extremely cold hardy and drought resistant once established. Fruits are prized by birds and are also eaten by bears and chipmunks, is not deer resistant. Grows 20'.

Zones 2-6

Price: \$ 5.25  
Size: 6-12"

**Scientific Name:** Amelanchier alnifolia



---

## SYRINGA (WILD MOCK ORANGE)

One of the most ornamental northwest US natives with masses of white very fragrant spring blooms. Medium green leaves turn to clear yellow in the fall. Upright forms. Good for hedges or specimen plantings.

**Scientific Name:** Philadelphus lewisii

Price: \$ 3.50  
Size: Plug



 FRAGRANT- has aromatic flowers or foliage.	 WILDLIFE VALUE-Has berries, nuts, blooms. Uses; wildlife food value or to provide shelter or cover.
 DROUGHT TOLERANT-Can withstand periods of drought once established.	 SWEATING RECOMMENDED-Plants may need to be sweated to break dormancy.
 FALL COLOR-Has attractive autumn leaf color change.	 NATIVE-Species is native to the Idaho area.

We must have a combined minimum order for each species. If a minimum has not been obtained after combining orders, the plant will not be ordered and you will be notified as soon as possible.

# Products

## RIGHT START FERTILIZER PACKETS

A time-release, biodegradable “tea bag” of nutrients you drop in the planting hole. Right Start releases its nutrients in the first 12 months, when the seedlings need them most.

Price: \$0.40 per packet

---

## STAKES, BAMBOO

3' bamboo stake used to support tree protectors.

Price: \$0.25

---

## TREE SEEDLING PROTECTORS, 18”

18” Protective net tube, physically prevents animals from reaching the growing plant. Install with support stake.

Price with stake: \$.1.00

Price without stake: \$0.75

---

## VISPORE TREE MATS

3'x3' mat that kills weeds by blocking sunlight. Contains over 400 micropores per square inch which allows precious water and minerals to reach your plants roots.

Price with staples (4) : \$3.00

Price without staples: \$2.00

Staples: Each: \$ 0.25

*If you are interested in purchasing the 2-4' tree shelters, please call for pricing and qty. Due to increased costs and lower demand, we will not be ordering them unless there is a request. We currently have a few of each size in stock and will sell them on a first come first serve basis.*

# Conifers

## CEDAR, WESTERN RED

Native to Northern Idaho. Recommended for reforestation and riparian enhancement. The heartwood is Idaho's most valuable and useful because it resists decay. Fast grower, with ample water. Used for many things, such as; shakes, fence posts, furniture and siding. Grows 150' **Zones 5-7**

**Scientific Name:** *Thuja plicata*

Price: \$ 3.50

Size: Plug



## FIR, DOUGLAS

Known also as red fir. It is an Idaho native. It needs well-drained soil for best growth. Growth is slow without supplemental water in areas with less than 18" rainfall. Grows 60-130' tall. **Zones 4-6**

**Scientific Name:** *Pseudotsuga menziesii* var. *gauca*

Price: \$3.50

Size: Plug



## FIR, GRAND

Glossy, dark green to bright green needles. Native throughout the Northwest. Often planted for commercial Christmas tree plantations. Good timber tree. Grows 200' tall. Grows well in a variety of environments. 9-12"

**Scientific Name:** *Abies grandis*

Price: \$3.50

Size: Plug



## JUNIPER, HORIZONTAL (Creeping Juniper)

Idaho native groundcover that is highly drought tolerant. It prefers full sun and adapts well to clay, sand, gravel, and compacted soils. It will also grow in acidic to slightly alkaline soils. Grows up to 6" tall but spreads up to 6 feet wide, making it a good choice for soil stabilization and erosion control projects. In winter the green foliage takes on a purple hue. Also a good Bonsai project. **Zones 3-9**

**Scientific Name:** *Sorbus scopulina*

Price: \$ 3.50

Size: Plug



## JUNIPER, ROCKY MOUNTAIN

Rugged, pyramidal tree with silvery-blue foliage. Survives well in hot, dry, summers of the Western U.S. Grows to 30'.

**Scientific Name:** *Juniperus scopulorum*

Price: \$3.50

Size: Plug



## LARCH, WESTERN

An Idaho native recommended primarily for reforestation. Best on deep, moist porous soils in high valleys, and on northern or westerly exposed slopes. Loses its needles each winter. Exceptional seedling growth (by age 4 = 8-10')

**Zones 3-7**

**Scientific Name:** *Larix occidentalis*

Price: \$ 3.50

Size: Plug



## PINE, AUSTRIAN

Fast growing, widely planted species for dense windbreaks and commercial Christmas tree plantations. Adaptable to wind, cold, salt, heavy clay to sandy soils. Grows 40-60' tall. **Zones 3-7**

**Scientific Name:** *Pinus nigra*

Price: \$3.50

Size: Plug



**PINE, PONDEROSA**

Idaho native with a fast growth rate. Withstands hot, dry sites well, and adapts to many soil types as long as it has good drainage and full sunlight.

Excellent wildlife benefit. **Zones 3-6**

**Scientific Name:** Pinus ponderosa var. ponderosa

Price: \$3.50

Size: Plug



**PINE, WESTERN WHITE**

Idaho native and state tree. Excellent for Christmas trees. Grows best on rich, porous soils in moist valleys and on middle and upper slopes of northerly exposure. Grows 90' tall. **Zones 3-9**

**Scientific Name:** Pinus monticola

Price: \$3.50

Size: Plug



**SPRUCE, COLORADO BLUE**

Bluish foliage. Widely planted across the country. Grows 50-60' tall. Makes an excellent windbreak species. Great winter cover for upland game birds and small animals. **Zones 2-7**

**Scientific Name:** Picea pungens

Price: \$3.50

Size: Plug



# CONIFER SEEDLINGS

DOUGLAS FIR  
PONDEROSA PINE  
WESTERN WHITE PINE  
BLUE SPRUCE

## BUY MORE SAVE MORE!

1-99=\$0.90  
100-499= \$0.65  
500+=\$0.55

We must have a combined minimum order for each species. If a minimum has not been obtained after combining orders, the plant will not be ordered and you will be notified as soon as possible.

# Fruit Trees

Once again we are offering a select variety of fruit trees. We are only ordering limited quantities due to the high cost of the trees. If you are interested in ordering the trees, we recommend that you call ahead to verify that there are some still in stock. If they are no longer available through the nursery or us, we can add you to a list for the next year, or we can try to offer you a different variety. If we have extremely high requests for the fruit trees, we will increase the number ordered each year as needed. These trees will need to be picked up on the pickup dates, they will not be held for any length of time. They are on a first come first serve basis.

Reminder—Please call before placing your order, to verify quantities.

**APPLE: Jonathan (Semi-Dwarf)**

Firm, juicy, full flavored fruit, high quality fresh or cooking. Red striped over bright yellow. Keeps well. Ripens mid-season. Needs a pollinator—*Honey Crisp will pollinate.*

Price: \$ 15.00

Size: 4-5' - 3/4" diameter

Quantities are limited. Please call before ordering.

---

**APPLE: Honeycrisp (Semi-Dwarf)**

Crisp, juicy with excellent flavor, rated superior. Keeps in common storage for up to 5 months. Fruit is mottled red over yellow. Ripens late September to late October. *Jonathan will pollinate*

Price: \$ 16.75

Size: 4-5' - 3/4" diameter

Quantities are limited. Please call before ordering.

---

**APPLE: Lodis**

Excellent tart flavor, cooking or fresh eating. Large, crisp, juicy green fruit. Summer apple ripening during July. Apple scab resistant. Needs a pollinator. *Honeycrisp and Jonathan will pollinate.*

Price: \$ 15.00

Size: 4-5' 3/4" diameter

Quantities are limited. Please call before ordering.

---

**CHERRY: Lapins**

Known as the "self-fertile Bing". Favored commercial cherry variety that produces heavy crops of large, sweet, firm dark red fruit, crack resistant, excellent flavor. Froste resistant, ripens late July **Self Pollinator**

Price: \$ 16.25

Size: 4-5' 3/4" diameter

Quantities are limited. Please call before ordering.

---